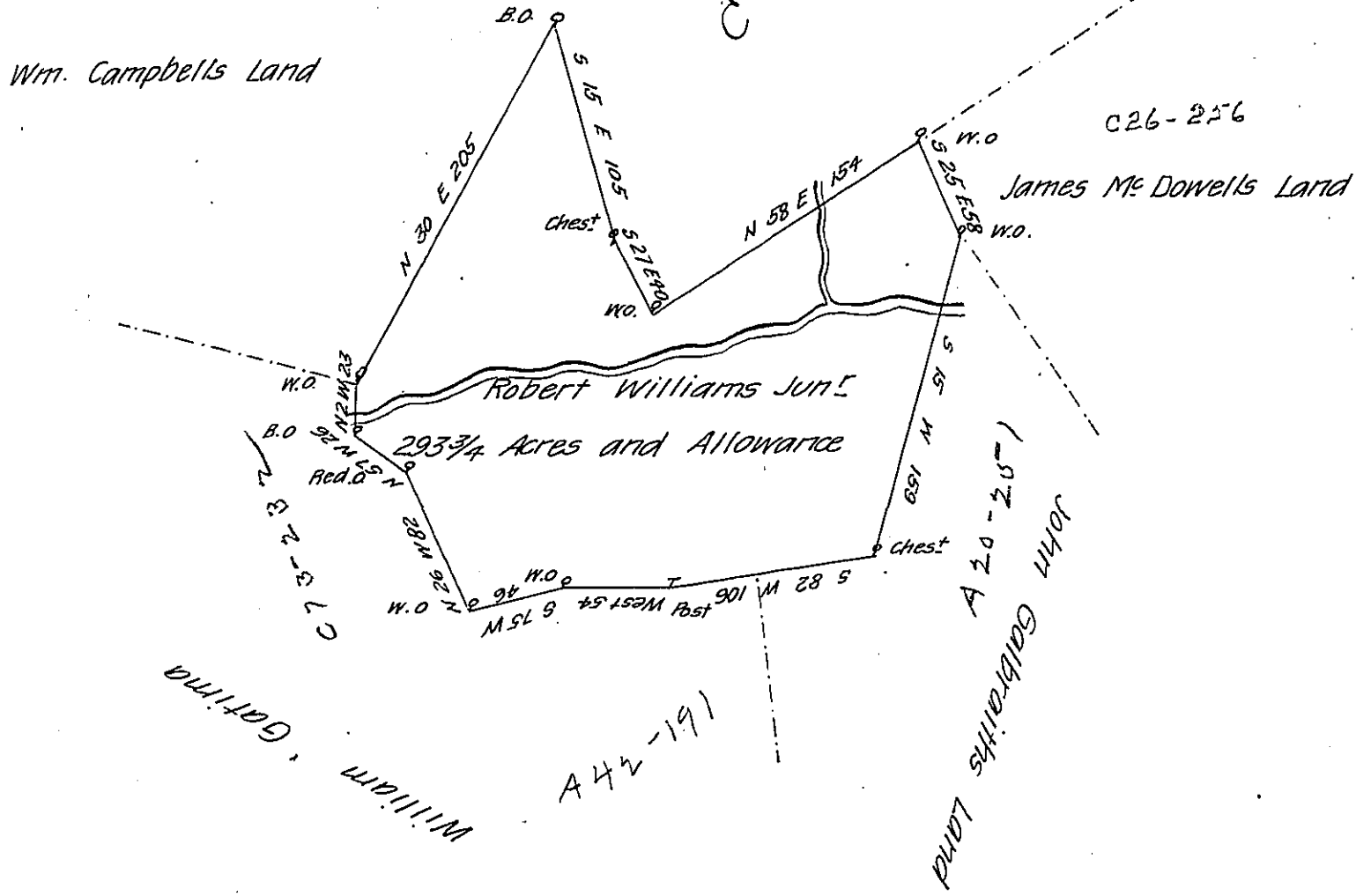


FORM NO 1.



A draught of a Tract of Land Situate in Donegall Township in the County of Westmoreland containing two hundred and Ninety three acres and three quarters of an acre and the allowance of Six P. Cent for Roads &c. Survey'd Jan<sup>y</sup> 9<sup>th</sup> 1799 to Robert Williams Jun<sup>r</sup> on his warrant dated the 13<sup>th</sup> June 1786 by Benjamin Lodge then Deputy Surveyor taken ~~from~~ from his draught of the same now in my office which I have examined and find correct

Certified March 26<sup>th</sup> 1803

by John Moore D.S.

To Samuel Cochran Esq<sup>r</sup>

Surveyor Gen<sup>l</sup> of Penn<sup>a</sup>

IN TESTIMONY that the above is a copy of the original remaining on file in the Department of Internal Affairs of Pennsylvania, made conformably to an Act of Assembly approved the 16th day of February, 1833, I have hereunto set my Hand and caused the Seal of said Department to be affixed at Harrisburg, this seventh day of June 1907

*Henry Howell*

Secretary of Internal Affairs.